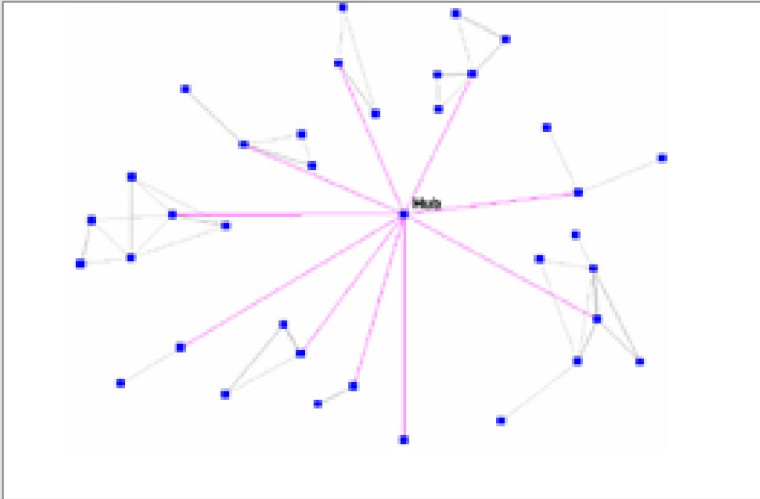




# CAMPUS RESEARCH DEVELOPMENT NETWORKS

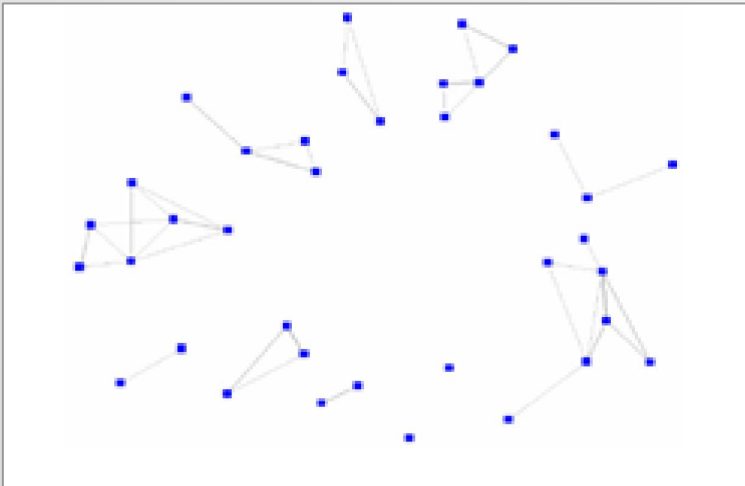
Exploring the Expertise in Your Own Backyard

# WHY CAMPUS RD NETWORKS?

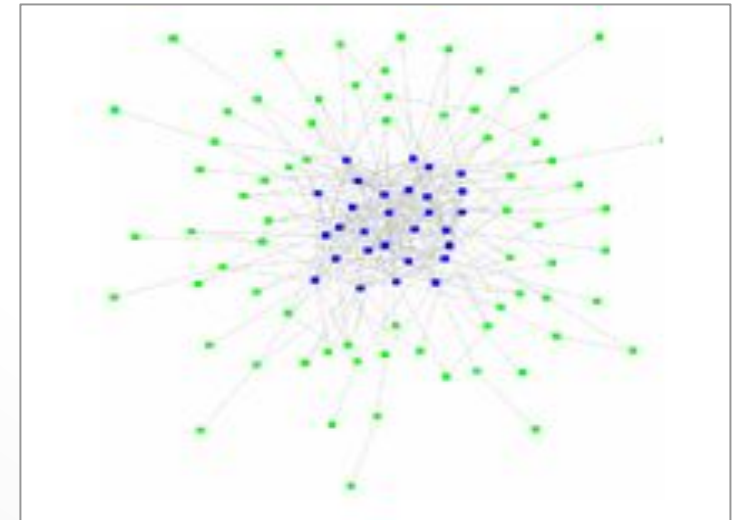


At a university with a central RD office, RD professionals can connect to expertise and information through that central group in a core and spoke model.

Many universities, however, do not have a central RD office that functions in this way.



A campus networking group moves a scattered network into a core/periphery network.





# Research Development Community of Practice

2014-present

## History and Activities

- 2014: NORDP spurred campus networking at home (network = 5-10 people)
- 2016-18: Annual half-day “mini-NORDPs” (network = 10-25 people)
  - Presentations from colleagues on large-scale projects, faculty development & peer review
  - ~50 attendees (2016) to 150 attendees (2018)
  - Nominal buy-in from units (<\$300 from multiple units for food/space)
  - Growing an internal listserv
- 2019: Host all-day NORDP GL Meeting for 180 attendees
  - Event supported by registration fees, staff effort from MICHR (our CTSA) & UMOR funding



# Research Development Community of Practice

## 2014-present

### Challenges

- Decentralized campus; no central leadership/guidance in RD
- Definition of RD as distinct from, and complementary to, research administration
- RDCP is not representative of all schools/colleges/institutes
  - RD staff exist in about half of the major research units
- Leadership buy-in (value of RD?)

### Progress

- In 2019, the Office of Research established a Director of RD position for better coordination/collaboration of efforts across campus and to provide services for low-resource units

### Governance (in progress)

- Established by-laws with vision & mission statements
- Coming soon: a steering committee to advance goals & oversee subcommittees



## Research Advancement & Development Professionals' Network (RADPN)

- **Mission: Provide professional development, training, and networking opportunities to research advancement and development professionals at the University of Minnesota**
- Began in 2016 as an OVPR-appointed group of 25, but continued as a voluntary staff network after a leadership shake-up.
- We drafted a mission and operating principles, then requested and received a charge from our VPR, along with \$20,000/year for three years. (currently in Year 3/3)
- RADPN is led by a 7-member steering committee who plan activities and report to OVPR annually.
- “General membership” includes ~ 200 people who are part of a Google Group used for discussion and announcements. They have the opportunity to join topic-based working groups.



## Research Advancement & Development Professionals' Network (RADPN)

- RADPN activities include:
  - Webinars and panel discussions – working with new faculty, using UMN reporting systems for RD functions, “fireside chat” about COVID-19 impacts on research
  - Conference scholarships for RD-related professional development
  - Red team reviews of interdisciplinary proposals
  - Annual half-day conference – so far, we’ve managed to host one
  - Working groups on research resources, communications, red team review process

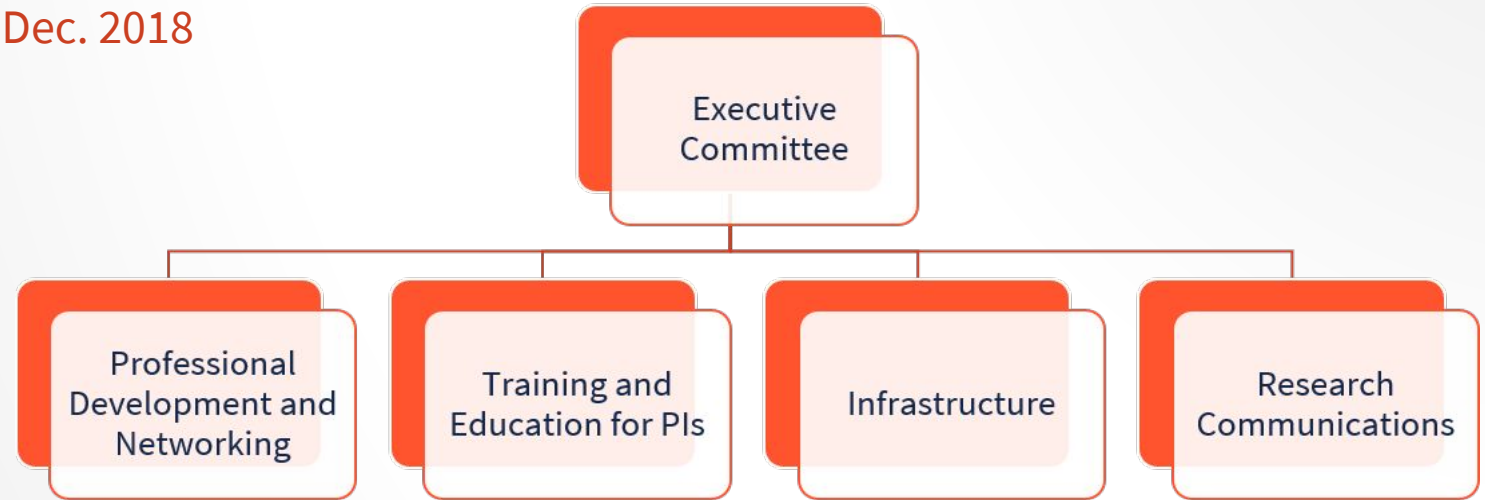
# Illinois Research Development Community

Formed Oct. 2017 and officially launched Dec. 2018



**120 members**

- Inclusive membership
- Communication through Microsoft Teams and biannual newsletters



Supported by the  
Vice Chancellor for  
Research & Innovation



**Activities and Events**

- Annual Research Development Day
- Pop-up networking lunches
- RD webinar series



Modest budget provided  
by the Office of Proposal  
Development, OVCRI,  
and others





LAUNCHED APRIL 2020

# UIC Research Development Network

- Open invitation to campus
- *Pro tempore* committee established structure & goals
- ~75 on email list
- No funding

## GOALS


- Share knowledge
- Create teams
- Increase capacity for proposal development
- Improve quality of proposals

## COMMITTEES


- Research Collaborations (16 people)
  - Mostly faculty and Associate Deans for Research
  - “Collaboration Classifieds”
  - Sharing priorities and needs of the Colleges
- Networking and Professional Development (4 people)
  - Networking events
  - Trainings
- Resource Library (7 people)
  - List of contacts
  - Document library

Launched and currently driven by effort from Office of Research Development within the Office of the Vice Chancellor for Research



A grayscale photograph of a snowy mountain landscape. In the foreground, a large evergreen tree is partially visible on the right side. A person is standing on a path in the middle ground, looking towards the camera. The background shows a vast, snow-covered mountain range under a bright sky. The overall scene is serene and majestic.

What has your network  
accomplished that wouldn't  
have happened without it?

A black and white photograph of a snowy mountain landscape. In the foreground, a person is seen climbing a steep, snow-covered slope. The person is wearing a dark jacket and light-colored pants, and is using a climbing rope. The background shows a vast, snow-covered mountain range under a clear sky. The overall scene conveys a sense of challenge and adventure in a high-altitude environment.

What are the greatest challenges for you and your group?

What does the  
future hold for your  
networking group?



Questions?





Maggie Berg, University of Illinois Urbana-Champaign  
[meberg@illinois.edu](mailto:meberg@illinois.edu)

Ellen Freeman, University of Minnesota  
[efreeman@umn.edu](mailto:efreeman@umn.edu)

Jill Jividen, University of Michigan  
[jjgoff@umich.edu](mailto:jjgoff@umich.edu)

Sarah O'Brien, University of Illinois at Chicago  
[sobrie1@uic.edu](mailto:sobrie1@uic.edu)